



Michelle Wight

MAKEUP ARTISTRY

Seattle & Beyond

MENU OF SERVICES

BESPOKE BEAUTY FOR *All*



THINGS TO KEEP IN MIND

- 1 Select one package - **Classic, Timeless, or Tailored** - this does not include bridal party rates. Want to work exclusively with Michelle Wight? Let us know!
- 2 Bride Only? Elopement? Please inquire for further pricing details. Not offered during peak bridal season.
- 3 For all **Saturday** requests (May - September) our booking minimum is bride hair and makeup + 4 Hair and 4 Makeup excluding any other fees that may apply.
- 4 Not sure if you reach the minimum? Just ask! You never know what may be possible.
- 5 We require lodging and travel for all island and destination weddings with a location more than 1.5 hours away from our studio.
- 6 A 25% non-refundable and non-transfer retainer secures your wedding. We do not offer trials prior to securing wedding day services.

*Penelope
stylist*

WORK WITH A LEAD



CLASSIC

\$900.00

This package is our basic Introductory package, offering essential services without any additional features. It covers wedding day hair and makeup, along with a trial preview for both hair and makeup, and includes classic standard lashes. Please note that accessory/veil placement, application of extensions, and touch up kits are not included in this package.



TIMELESS

\$1000.00

This package stands as our top choice among clients! It encompasses wedding day hair and makeup services, a comprehensive trial preview for both hair and makeup, medium to full coverage flawless foundation tailored for enduring wear, contour and highlight techniques, premium individual or strip lashes that are reusable, lip gloss application, and expert veil/accessory placement.



TAILORED

\$1100.00

This comprehensive package contains all the features of both the Classic and Timeless packages. Additionally, it offers mink lashes, placement of clip-in extensions and hair accessories, as well as a makeup touch-up kit for added convenience. Please note that extensions themselves are not provided within this package.



CLASSIC

\$600.00

This package is our basic Introductory package, offering essential services without any additional features. It covers wedding day makeup, along with a consultation trial for makeup, and includes classic standard lashes. Please note that touch up kits are not included in this package.



TIMELESS

\$700.00

This package stands as our top choice among clients! It encompasses wedding day makeup services, a comprehensive consultation trial for makeup, medium to full coverage flawless foundation tailored for enduring wear, contour and highlight techniques, premium individual or strip lashes that are reusable, and lip gloss application.



TAILORED

\$800.00

This comprehensive package contains all the features of both the Classic and Timeless packages. Additionally, it offers mink lashes, as well as a makeup touch-up kit for added convenience.

AS SEEN IN

PEOPLE MAGAZINE
STYLE ME PRETTY
SEATTLE BRIDE MAGAZINE
GREEN WEDDING SHOES
MODERN WEDDINGS
EVENINGS ON KING 5

PODCAST GUEST:
GET TO KNOW YOUR
WEDDING PRO
BEST MADE WEDDINGS
WISDOM FROM THE WARDROBE
BEST COAST



NOT YOUR BASIC BRIDAL PACKAGE

\$1200.00

Are you the bride who desires the ultimate experience? Look no further, because this package is tailored just for you!

You'll have the exclusive opportunity to work with Michelle Wight, the owner, celebrity stylist, and lead hair and makeup artist. Michelle, a second-generation Mexican-American, female business owner, and mother of four, has shaped her vision around creating a warm and inclusive environment within the hair and makeup industry.

With this package, you are guaranteed to have Michelle as your stylist for both your trial and wedding day.

The package includes a comprehensive hair and makeup trial consultation experience, along with a swag bag containing three full-size products of Michelle's must-haves.

Please note that the pricing excludes the bridal party and attendees. The minimum booking requirements for the package are as follows:

- Hair for Attendees: \$150 each (with a minimum booking of 6 persons)
- Makeup for Attendees: \$150 each (with a minimum booking of 6 persons)
- Hair and Makeup Combo: \$300 each (with a minimum booking of 3 persons)



WORK WITH
Michelle Wight



BRIDAL PARTY & ATTENDEES *services*

For all Saturday requests during peak season, a minimum of 4 bookings for both hair and makeup is required, excluding travel and any additional fees.

Hair & Makeup Package: \$250.00 per person

This comprehensive service includes hair styling, makeup application, and false lashes for the wedding day.

Makeup Only: \$150.00 per person

This service provides makeup application and false lashes for the wedding day.

Hair Only: \$150.00 per person

This service offers dry styling on the wedding day. Please note that blowout services are not available.

Flower Girl: \$80.00 per person Designed for children aged 6 and under.

Male Grooming: \$90.00 per person Tailored for the groom and groomsmen.

A bride in a white lace dress and veil stands in front of a large window, holding a bouquet of flowers. The scene is brightly lit, suggesting a sunny day. The background shows a white building with many windows and some greenery. The text is overlaid on the image in a white, cursive font.

*You know that feeling when you love how you look and you just radiate confidence?
Allow us to create your signature style and give you that feeling.*



A LA *carte*

Assistant Stylist Fee: \$150.00 per stylist

This fee is added when the package requires an additional stylist to complete the services.

Travel: To be determined per stylist

Charged for all locations outside of a 20-mile radius from our studio. The rate is \$2 per mile for the round trip. Excludes Island Weddings, destination weddings, and weddings requiring a ferry - pricing varies pending location.

Early Morning Start Time Fee: \$150.00 per stylist

Applicable when services begin between 6:00 AM and 7:29 AM. For services starting earlier than 6:00 AM, additional rates will apply, and an expedited schedule may be required.

Expedited Schedule: \$300.00 per stylist

Please contact us for further details and pricing regarding this request.

Ferry: To be determined per stylist

Dependent upon the destination.

Hotel and Lodging: To be determined

Dependent upon the destination and the number of stylists needed.

Holiday Fee: \$200 per stylist

Charged for requests falling within holiday weekends, the week of Thanksgiving, the last two weeks of December, and all federal holidays.

EXCLUSIVE *add-ons*

Mink Lashes: \$45.00 Per Person

Indulge in voluminous luxury lashes that can be worn up to 25 times.

Extensions Application: \$100.00 Per Person

Note: Extensions not included; must be provided separately.

Lip Touch Up Kit: \$45.00 each

Ideal for your "I do" crew, this kit includes a lipstick and gloss for touch-ups.

Please note: Airbrush services are not available.



A woman with dark hair, wearing a white off-the-shoulder dress with a pink and green floral pattern, stands in front of a large, lush floral arrangement. The arrangement includes various flowers like roses, hydrangeas, and peonies in shades of white, yellow, and red. The background is a soft, out-of-focus grey.

THE ELEVATED *Trial*

\$600.00

Preparation is essential for ensuring your big day flows seamlessly. And what better way to prepare than in style? Treat yourself and up to three guests to a luxurious 2-hour private studio session.

Indulge in some bubbly, savor delectable treats, and allow us to pamper you as we put the finishing touches on your wedding day look. Your session will include a hair style and a makeup style, ensuring you feel absolutely radiant as you step into your special day.



THE TAILORED *Trial*

\$700.00

Undecided about your hairstyle or makeup look for the big day? Whether you're torn between wearing your hair up or down or deciding between soft, natural makeup or a touch of glam, this experience is tailored for you. Optimal for the bride eager to explore various looks, this package offers (2) hair and (2) makeup styles to help you find the perfect combination. Immerse yourself in a 3.5-hour session dedicated solely to you. Please note that this package does not include additional guests. Let's work together to bring your vision to life and make it a day to remember.



NOT YOUR BASIC BRIDAL *Trial*

\$1200.00

This package combines the best of our Elevate and Tailored trial offerings. Treat yourself and up to three guests to a luxurious 3.5-hour private session in our studio.

Indulge in some bubbly, savor delicious treats, and allow us to pamper you.

ARE YOU *Eloping?*



Experience on-site styling that's as intimate as your wedding itself. This package includes complimentary lashes and a lipstick for touch-ups, ensuring you look flawless throughout your special day.

HAVING A MICRO *Wedding?*



Great things often come in small packages. If your bridal party doesn't meet our minimum requirements, let's discuss our microwedding services tailored to your intimate celebration.

Please Inquire

Sunrise elopements or locations that require a ferry are subject to a hotel stay in addition to service rate.

BRIDE ONLY *Services?*



Step into our beautiful studio and indulge in a 90-minute hair and makeup appointment, where our expert stylists will ensure you're perfectly prepared to walk down the aisle with confidence.

SPECIAL EVENT *Services*

Going beyond bridal, we specialize in special events, photoshoots, engagement, and headshots. We aspire to create your signature style for all of life's moments.

In-Studio Hair and Makeup: \$250.00

In-Studio Makeup Only: \$150.00

In-Studio Hair Only: \$150.00

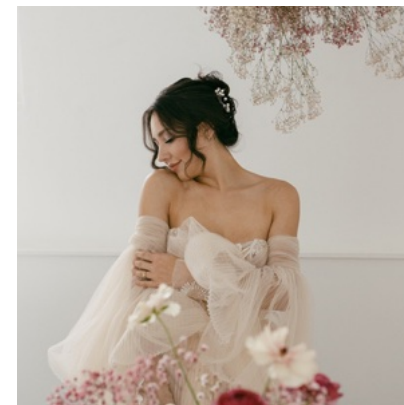
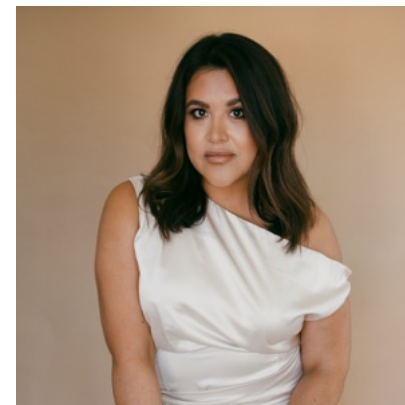
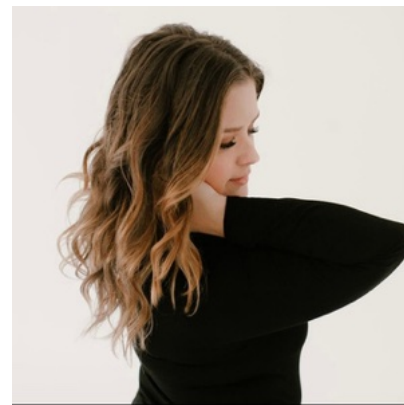
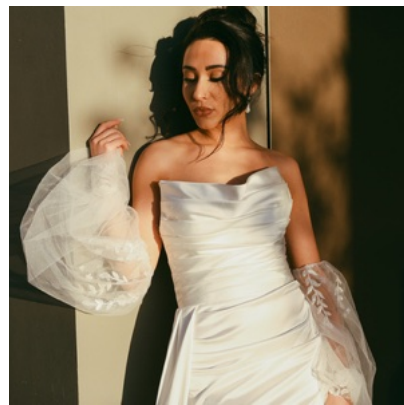
On-site services are available at an extra charge.



WE'LL LEAD, *you follow...*

An authentic look at our team and clients, plus all the beauty inspo your heart desires.

@michellewight.com



GET IN *Touch*....



WEBSITE

www.michellewight.com



EMAIL ADDRESS

michelle@michellewight.com



PHONE NUMBER

(206)-557-8947



COMPANY ADDRESS

321 NE 72nd St
Seattle, WA 98115